

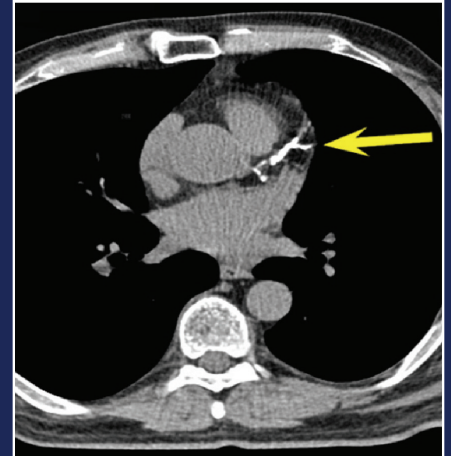
CT IMAGING CARDIAC CALCIUM SCORING

Cardiac scoring, which is also known as a Heart Scan or Calcium Score, is a non-invasive CT scan of the heart. It will calculate your risk of developing Coronary Artery Disease (CAD) by measuring the amount of calcified plaque in the coronary arteries. Calcified plaque results when there is build-up of fat and other substances under the layer of the arteries. This material can calcify, which shows the presence of atherosclerosis, a disease of the vessel wall known as coronary artery disease.

WHO IS A CANDIDATE FOR A CALCIUM SCORE CT?

Individuals at high risk for developing heart disease are good candidates for cardiac calcium scoring. Those in the high-risk category include people with:

- High blood pressure
- High cholesterol
- Diabetes
- High stress levels
- A history of smoking
- Men over 40 and women over 45 years of age
- A family history of heart disease



Cardiac calcium score - CT imaging of the heart.

THE IMAGING PROCEDURE: WHAT TO EXPECT

Lying on your back, EKG electrodes will be placed on your chest to monitor your heart rate. The CT table will move throughout the procedure while taking pictures of your heart. You will be asked to hold your breath for a few seconds. The entire procedure should take about 5-10 minutes.



CARDIAC CALCIUM SCORING

SCORE	PRESENCE OF PLAQUE
0	No plaque is present. You have less than a 5% chance of having heart disease. Your risk of heart attack is very low.
1-10	A small amount of plaque is present. You have less than a 10% chance of having heart disease. Your risk of a heart attack is low. However, you may want to quit smoking, eat better, and exercise more.
11-100	Plaque is present. You have mild heart disease. Your chance of having a heart attack is moderate. Talk with your doctor about quitting smoking, eating better, beginning an exercise program, and any other treatment you may need.
101-400	A moderate amount of plaque is present. You have heart disease, and plaque may be blocking an artery. Your chance of having a heart attack is moderate to high. Your health professional may want more tests and may start treatment.
Over 400	A large amount of plaque is present. You have more than a 90% chance that plaque is blocking one of your arteries. Your chance of having a heart attack is high. Your health professional will want more tests and will start treatment.

According to WebMd, 2007

WHAT DO THE RESULTS MEAN?

The likelihood of having heart disease or a heart attack depends on your calcium scoring. The lower your calcium score and percentile rank, the less likely you are to have heart disease or have a heart attack compared to other men or women your age.

ADVANCES IN CARDIAC CT

Approximately 58 million Americans have one or more forms of coronary artery disease. Heart disease remains the number one killer of men and women in the U.S.

Advances in multi-detector technology now provides high resolution, three-dimensional images of the heart within a single 10 to 15 second breath hold. At Charter Radiology we utilize state-of-the-art CT scanners, which allow for up to 60% radiation dose reduction.

Schedule a cardiac calcium scoring at Charter Radiology.

Cost: \$60



10700 CHARTER DR., SUITE 110
COLUMBIA, MD 21044

116 WESTMINSTER PIKE, SUITE 104
REISTERSTOWN, MD 21136

443.917.2855
www.CharterRadiology.com